



# Jason and the Wakefield Adventure

## Easy Read Guide



### Jason and the Wakefield Adventure

#### Wakefield Exchange

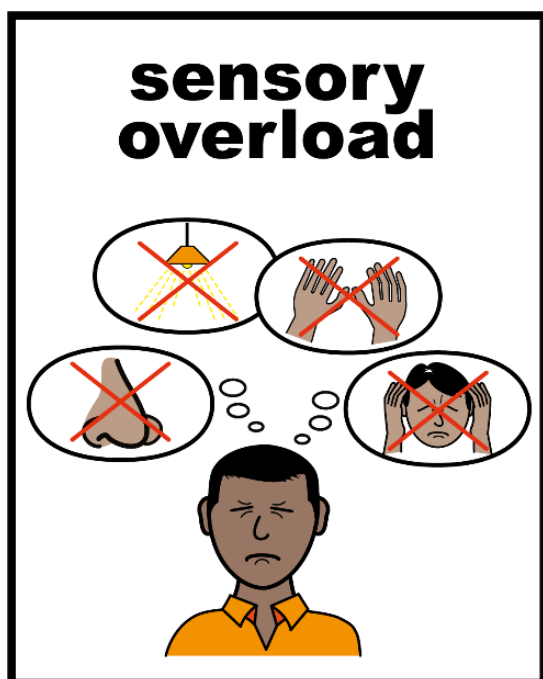
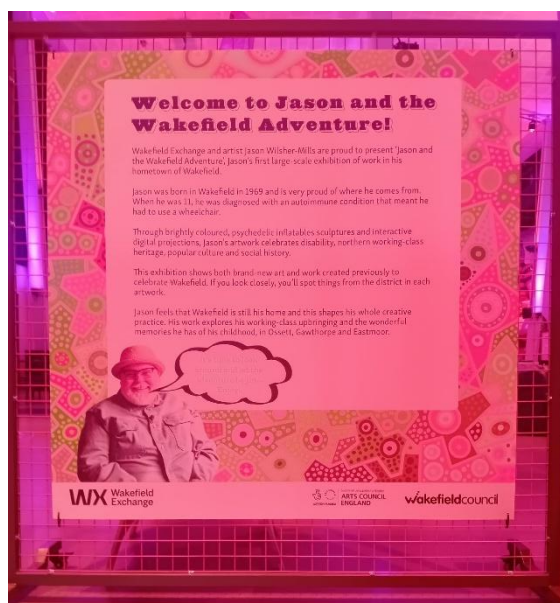
Easy read guide to help you plan your visit.

Jason and the Wakefield Adventure is an **exhibition** by the artist **Jason Wilsher-Mills**.

Jason makes art that tells stories about his life.

He tells stories about:

- how he was very ill when he was a child
- his family life
- how he became an artist.



There are **16 different artworks** in the exhibition.

These include:

- Inflatable Sculptures
- Fibreglass Sculptures
- Digital Projections
- Augmented Reality

## Sensory Warning

This exhibition will have **noise** and **coloured lights**.

There will be some **flashing lights** in the sculptures.

**Ear defenders** are available at the **welcome point**.

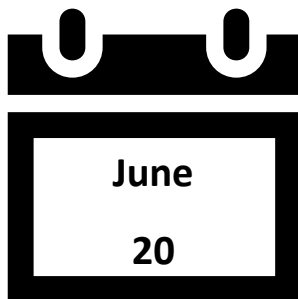


Please **do not touch** the artworks.

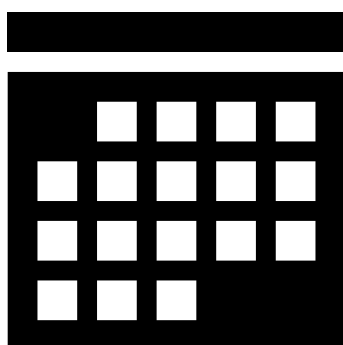
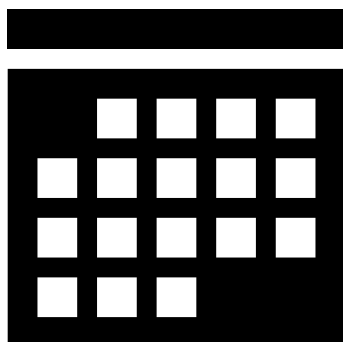


The exhibition is at **Wakefield Exchange**.

The venue is in **Wakefield City Centre** near the bus station.



The exhibition **starts** on **Friday 20 June 2025**



The exhibition **ends** on  
**Sunday 7 September 2025**

At **term time** the exhibition is  
**open:**

- Wednesday – Saturday  
10am-5pm
- Sunday 10am-4pm

During **Summer Holidays** (21  
Jul - 31 Aug) the exhibition is  
**open:**

- Monday-Saturday 10am-  
5pm
- Sunday 10am-4pm



You **do not need** to book to visit.



You **do not need** to pay to visit.



You can **eat and drink** in the exhibition.





You can **breastfeed** or **bottle-feed** babies.



People sometimes **speak quietly** at an exhibition. You **do not** have to **speak quietly**.



The exhibition is in the **Shed** in the **Main Hall**.



Jason and the Wakefield adventure is about

- Celebrating **disability**
- Northern **working-class heritage**
- Popular **culture**
- Social **history**



## Sensory Map

A **sensory map** of the exhibition will be available.

The map will show particularly **loud** or **triggering areas**.

You can pick up a map at the **welcome point**.

The map is also on the **website** here: [Sensory Map](#)



There are **circular floor stickers** on the exhibition floor.



The stickers have a **pattern** that you can feel with your feet.

The stickers have a **finger pointing** the way.

**Follow** the stickers to get to each stop.



**The Jolly Pinder of Wakefield**

This inflatable sculpture is 20 metres long and is the largest of his works.

It is suspended from the ceiling.





It is about the history of the Jolly Pinder of Wakefield. This a character featured in an original medieval folk ballad.

A pinder is a townsman in charge of impounding stray animals.

The name pinder relates to Pinderfields Hospital. This is where Jason stayed for a year and was diagnosed with his illness.



### **Sheep Clouds**

These are inflatable sheep. They are suspended from the ceiling.

The pinder looks after and cares for the sheep.



The sheep are flying with the pinder.

## The Welcome Hand



The design of the inflatable is inspired by the Beatles film Yellow Submarine.

The point of the finger is from Jason's memory of breaking his fingers as a child and wearing a splint.

## Argonaut Heart



The heart was made for the Commonwealth Games in Birmingham in 2022.

It represents love, kindness and joy, which is at the centre of all of Jason's work.



## Changing Places

This sculpture was created in response to the changing places toilet movement.

Changing places are accessible toilet facilities for disabled adults and children.

It tells the story of the movement and Jason's personal reflections about his life as a disabled person.

The sculpture is decorated with tattoos and writing.



## Jason & his Argonaut

This is Jason's first inflatable sculpture.

Inspired by the myth of Jason and the Golden Fleece. A myth is a story.

It shows Jason the hero letting the golden ram carry him on his adventures through the world.

He wears chunky boots, a helmet, tattoos and a stripey jumper like a cartoon character or a rugby player.

There is writing on the chest with the names of friends some who are no longer alive.







## Corby Head

Jason created the Corby Head to represent the people he was working with. These people were from the learning disability communities of Corby in Northamptonshire.

It is a symbol of defiance and joy in the face of the lockdown.

## Green Man



This inflatable is inspired by the Green Man. It is a symbol of spring and renewal.

Jason's Green Man is less leafy and more cartoon-like. There is a strong feeling of the fairground characters he loves.

The figure sports a quiff hairstyle. The decoration is





drawn from patterns seen in local churches.

## Scarborough Crab



This inflatable is based on Jason's childhood experience of going on holiday with his Mum and Dad. He went to the seaside in Scarborough.

The crab is a symbol of the seaside town.

## Corby Rocker



This was made with two learning disabled groups in Corby Northamptonshire.

The groups shared their stories with Jason.

The character design shows the key characteristics of their members.



## Corby PiP Princess

This was made with two learning disabled groups in Corby Northamptonshire.

'PIP' stands for Personal Independence Payment. This is a benefit which can be paid to people with an illness, a disability or a mental health condition.



## Brave Boy Billy

Brave Boy Billy is shown sitting on a space hopper.

A space hopper is a rubber toy which was popular in the 1970s when Jason was a child.



This inflatable shows Jason's playful side. It also highlights the serious issue of the shortage of wheelchairs worldwide.

There is only one wheelchair for every four people who need to use them.

### **I Am Argonaut**



This sculpture is inspired by William Harvey. He is a scientist who conducted work around the circulation of blood.

It also shows Jason's experience contracting chicken pox at 11 years old.

Chicken pox is a condition where a person has itchy spots on the skin.



The pox attacked Jason's central nervous system. This caused him to be paralysed from the neck downwards.

Paralysed is a condition when you cannot move.

### **Manchester Argonaut**

The sculpture was created for the People History Museum in Manchester.

Jason worked with children, young people, and adults with disabilities across the UK.

He collected stories from the people he worked with.

The design reflects Manchester's culture of music, dance, history, and identity.







## Planet Wakefield

This is a film showing all the characters Jason has created.



The film shows famous Wakefield people.

It is a video projection on the wall above the stage.

## Magic Mirror AR

This is an **augmented reality** installation.



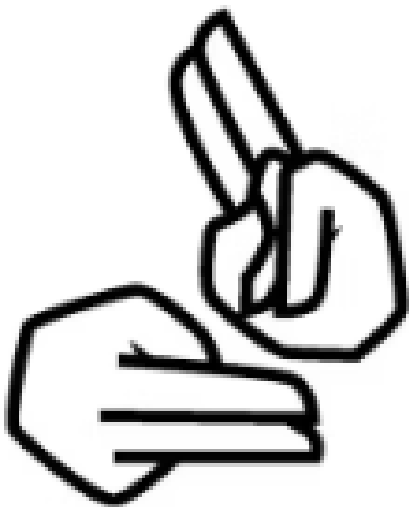
**Stand** in front of the screen.

You will see your face appear on the screen.

A face filter will appear on the screen.

The filter will be the Accordion Lady or the Wakefield Viking.





## Exhibition accessibility

You can find **information** at the **start** of the exhibition.

## BSL Guided Tour

This tour is aimed at deaf or hard of hearing visitors.

The tour will be delivered by a guide in **British Sign Language (BSL)**.

The tour is **free** to attend.

Booking is encouraged but not essential. More **information** **here:** [BSL Guided Tours](#)



## Audio Described tours

This tour is for **blind and visually impaired visitors**.

A guide will audio describe the exhibition.

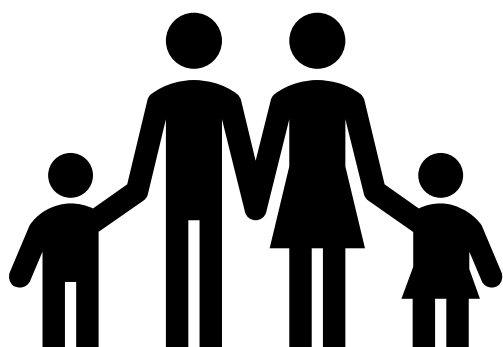
The tour is **free** to attend.

Booking is encouraged but not essential. More **information here:** [Audio Described Tours](#)

## SEND tours for families

There will be a short tour of the exhibition. You can **handle sensory items**.

**Booking is required.** More information here: [Family SEND Tours](#)





## Welcome Tour

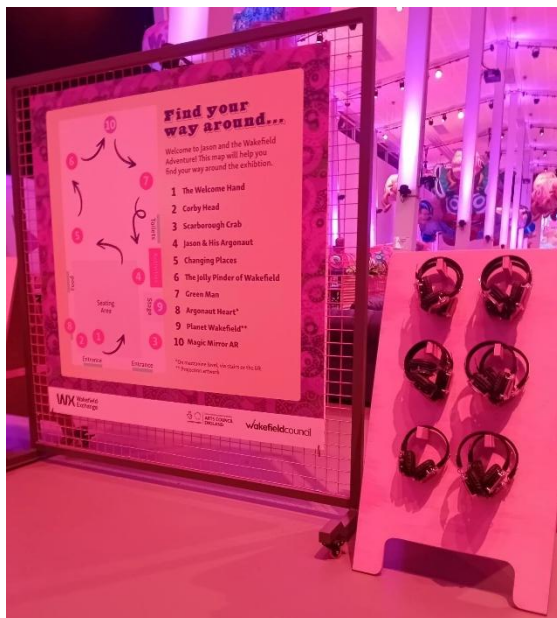
Our **staff** will give you a short intro to the exhibition. Our staff wear a **blue uniform**.

You can **pick up a map** and enjoy the space in your **own time**.

The tours are available:

- **Every Thursday at 11:00am**

No booking required you can drop in. More **information** **here:** [Explore the Exhibition](#)



## Relaxed Openings

There will be:

- lower light levels
- reduced sound
- noise reducing headphones available

No booking required you can drop in. More **information** here: [Explore the Exhibition](#)

## Audio Welcome

There are **audio headsets** you can pick up. These have a **welcome message** from the artist.

These are at the **welcome point** by the entrance.



## Large print guides

There will be **large print guides** of the exhibition.

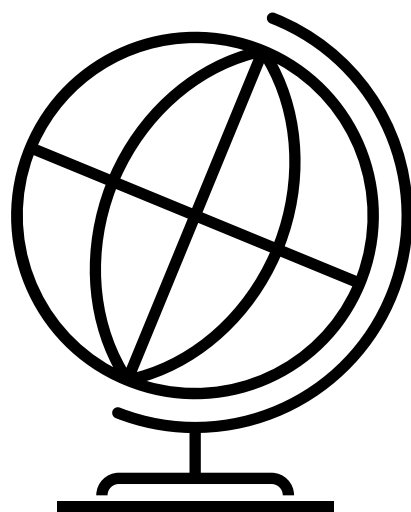
You can pick up a guide at the **welcome point**.

## Translations

There are **language translations** available at the exhibition entrance.

The languages available are **Polish, Arabic, and Urdu**.

This is also on our website here: [Explore the Exhibition](#)







## Family crafts

Relaxed family friendly craft sessions inspired by the exhibition and the stories.

The sessions are **free** and booking is not required.

More info: [Family Craft Workshop](#)

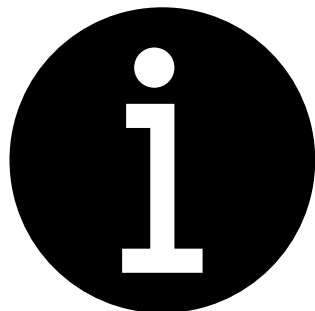
## Workshops

There are workshops linked to the exhibit that you can attend such as:

- **Life drawing**
- **Mixed Media**
- **Character writing**
- **Singing**



All events are **free**. You must **book your place**.



Contacting the venue

More info: [Jason and the Wakefield Adventure website](#)

The **venue access information** is here: [Plan Your Visit | Wakefield Exchange](#)

If you have any **questions about access** you can visit: [Explore the Exhibition](#)

You can also **email the team** at [hello@wxwakefield.co.uk](mailto:hello@wxwakefield.co.uk).